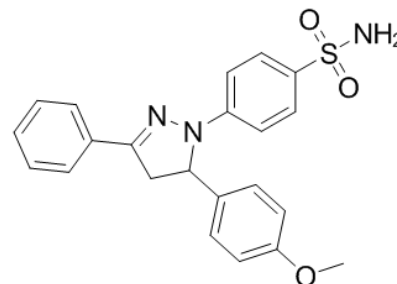


Product Name : ML141
Cat. No. : PC-43180
CAS No. : 71203-35-5
Molecular Formula : C₂₂H₂₁N₃O₃S
Molecular Weight : 407.4854
Target : Small GTPase
Solubility : DMSO: ≥ 55 mg/mL



Biological Activity

ML141 (CID-2950007) is a potent, selective, reversible non-competitive inhibitor of **Cdc42** GTPase with IC₅₀ of 200 nM in biochemical assays, shows no appreciable inhibitory activity against Rac1, Rab2, Rab7 or Ras. ML141 also exhibits IC₅₀ of 2.6 and 5.4 μM for Cdc42 wild type and activated mutant in the primary HTS bead-based assays. ML141 enhances G-CSF-induced hematopoietic stem and progenitor cell mobilization, also significantly protects neuroblastoma cells from metformin-induced apoptosis.

References

- Surviladze Z, et al. Probe Reports from the NIH Molecular Libraries Program [Internet].
Chen HY, et al. *EMBO Mol Med*. 2013 May;5(5):723-36.
Zhang Y, et al. *Neuroscience*. 2015 Mar 19;289:381-91.
Chen C, et al. *Int J Hematol*. 2015 Jan;101(1):5-12.

Caution: Product has not been fully validated for medical applications. Lab Use Only!

E-mail: tech@probechem.com